



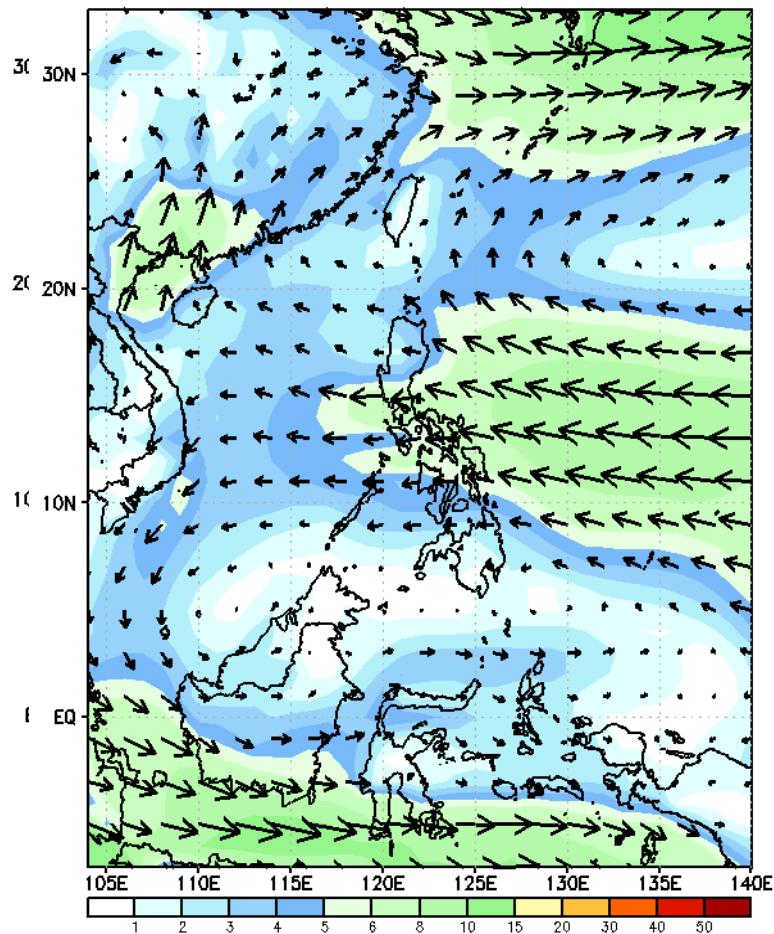
# Week 1 & Week 2 Forecast for the Philippines using GEFS Model



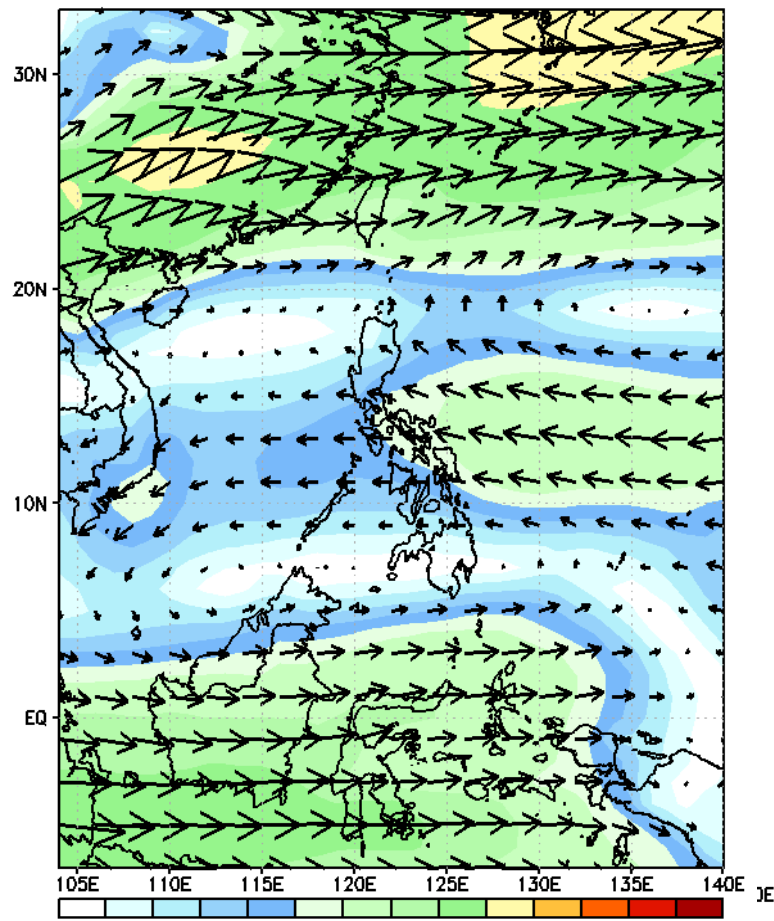
# GEFS Week-1 Wind Forecasts:

Week 1: Mar 21-27, 2025

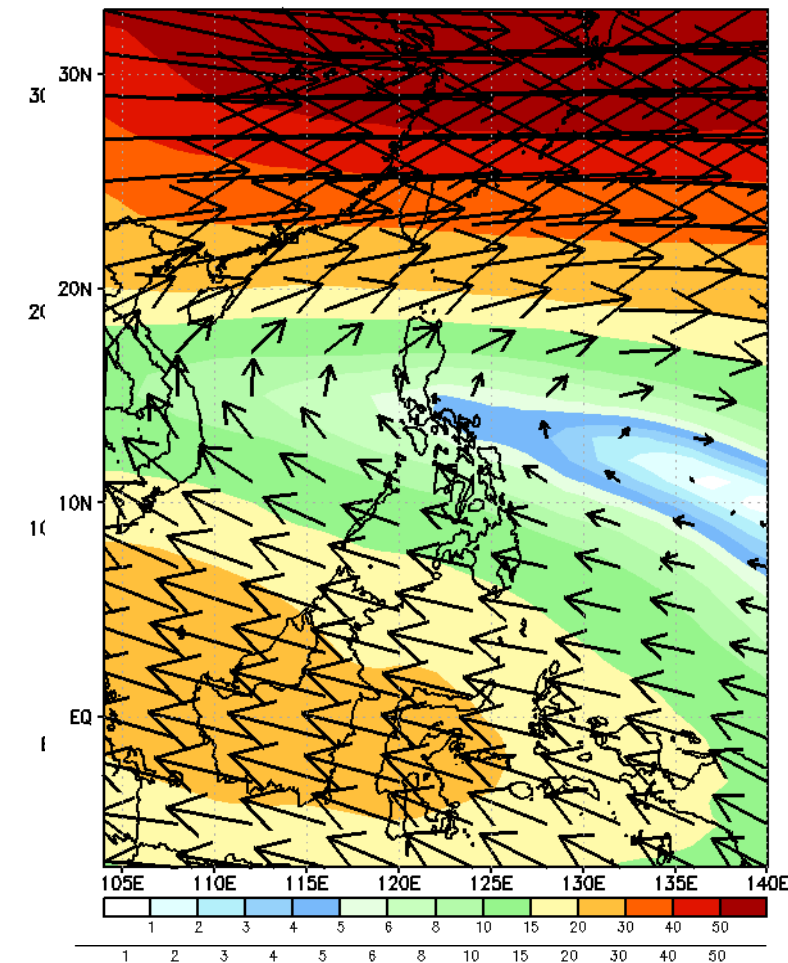
GEFS Week-1 850-hPa Wind Total  
Valid: 20250324 - 20250330



GEFS Week-1 700-hPa Wind Total  
Valid: 20250324 - 20250330

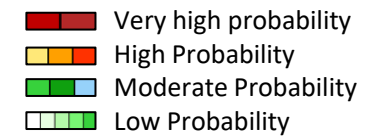


GEFS Week-1 200-hPa Wind Total  
Valid: 20250324 - 20250330



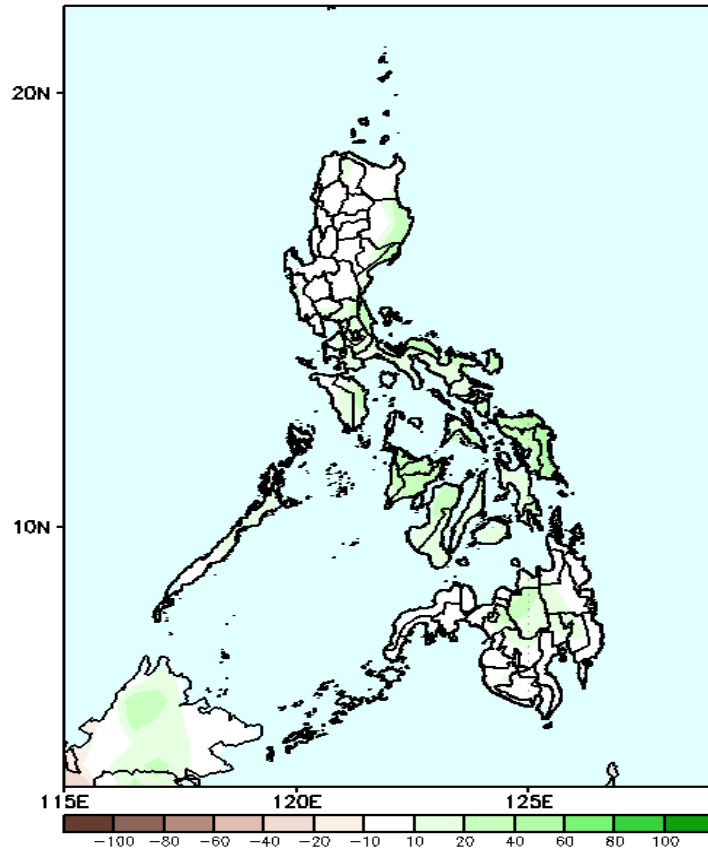
Easterlies affecting most parts of the country during the forecast period

# Precipitation Anomaly and Exceedance Probability > 25/50 mm



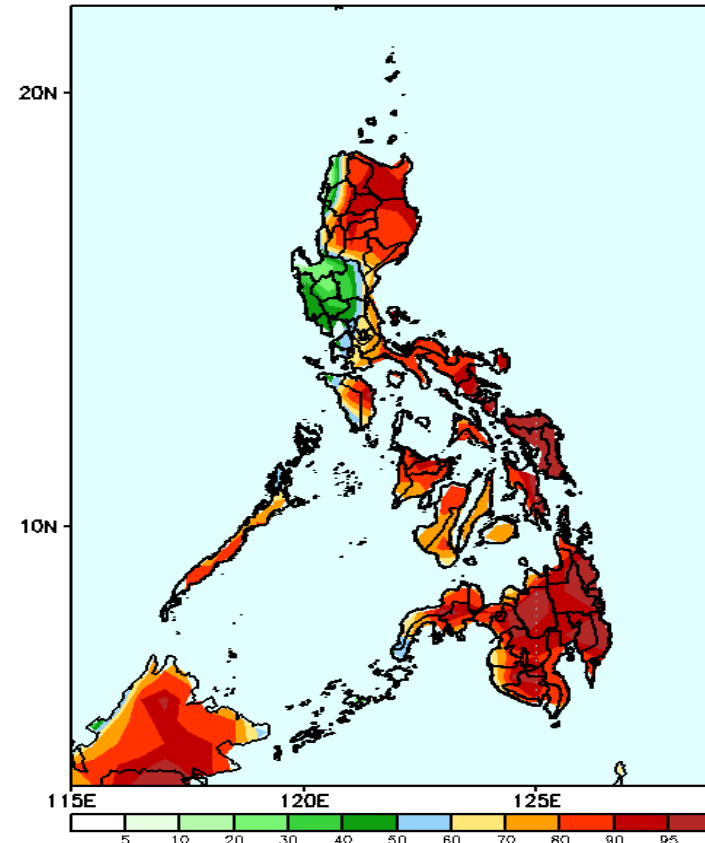
## Week 1: Mar 21-27, 2025

GEFS Week-1 Precip Anomaly  
Valid: 20250324 - 20250330



Increase of rainfall of 20-40mm in the eastern and southern parts of Luzon, Visayas and Central Mindanao.

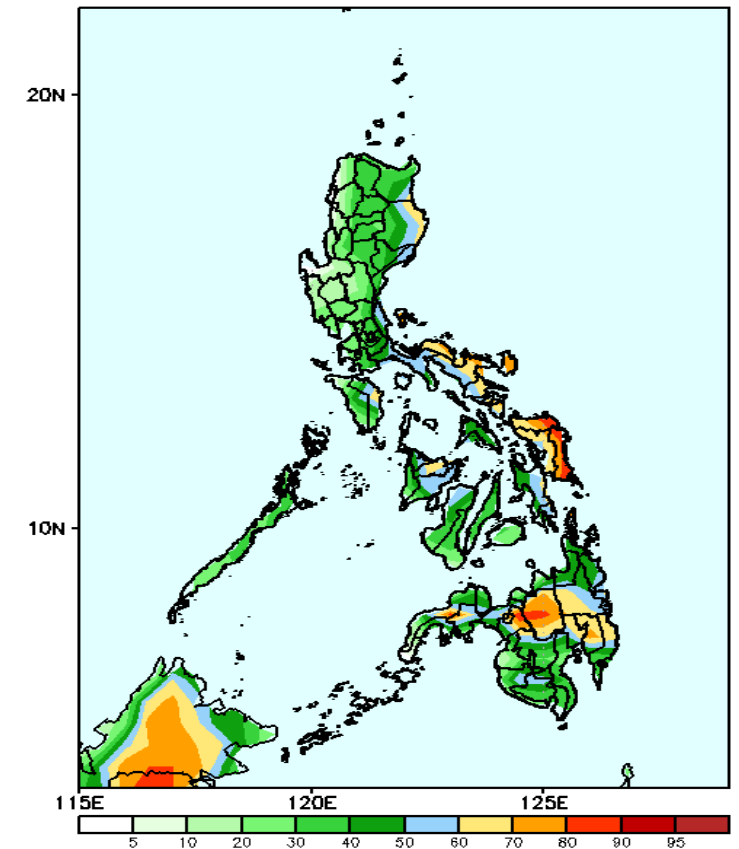
GEFS Week-1 Exceedance Prob. > 25mm  
Valid: 20250324 - 20250330



### Probability to Exceed 25mm

- High to very high over most parts of Northern Luzon, Quezon, Bicol Region, Visayas and Mindanao;
- Moderate to high over the rest of Luzon.

GEFS Week-1 Exceedance Prob. > 50mm  
Valid: 20250324 - 20250330



### Probability to Exceed 50mm

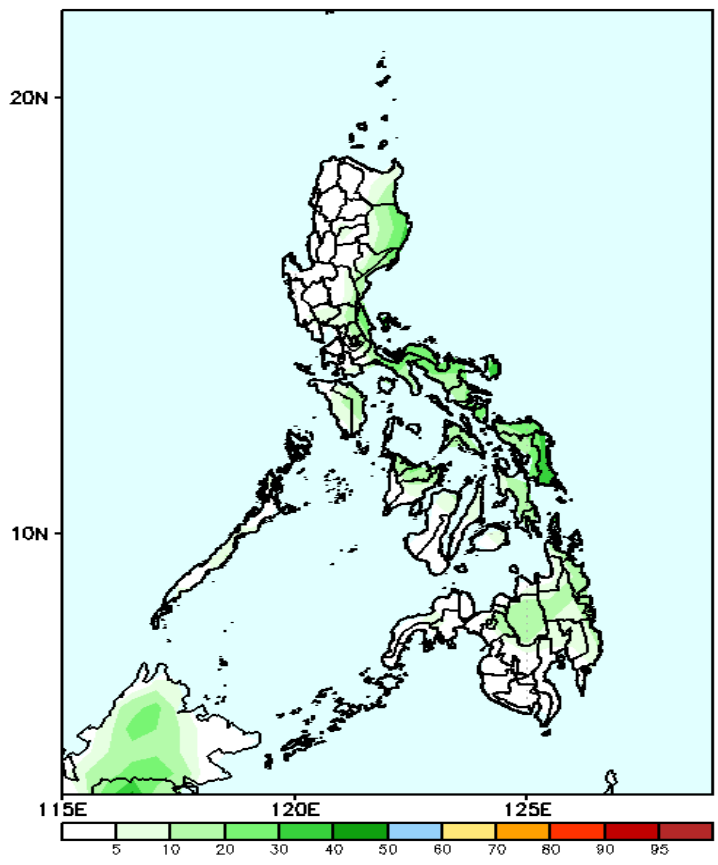
- Moderate to high over the eastern part of Cagayan and Isabela, Quezon, Bicol Region, Oriental Mindoro, Romblon, Marinduque, most parts of Panay Is. And Eastern Visayas, northern part of Negros Occidental and most parts of Mindanao;
- Low to moderate over the rest of Luzon and Visayas and the southern part of Mindanao;

# Exceedance Probability > 100/150/200 mm

- Very high probability
- High Probability
- Moderate Probability
- Low Probability

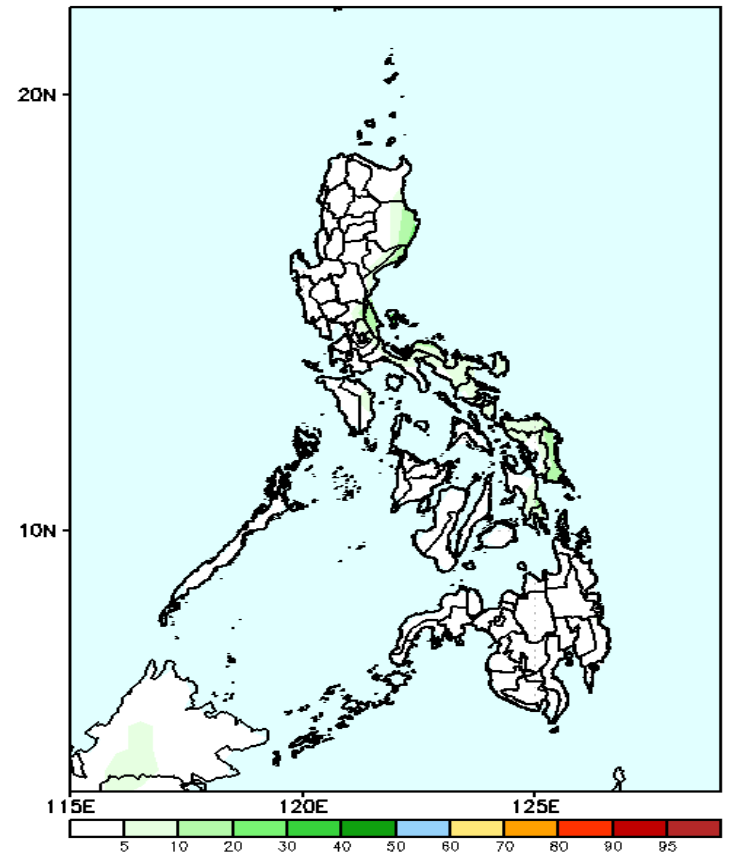
## Week 1: Mar 21-27, 2025

GEFS Week-1 Exceedance Prob. > 100mm  
Valid: 20250324 - 20250330



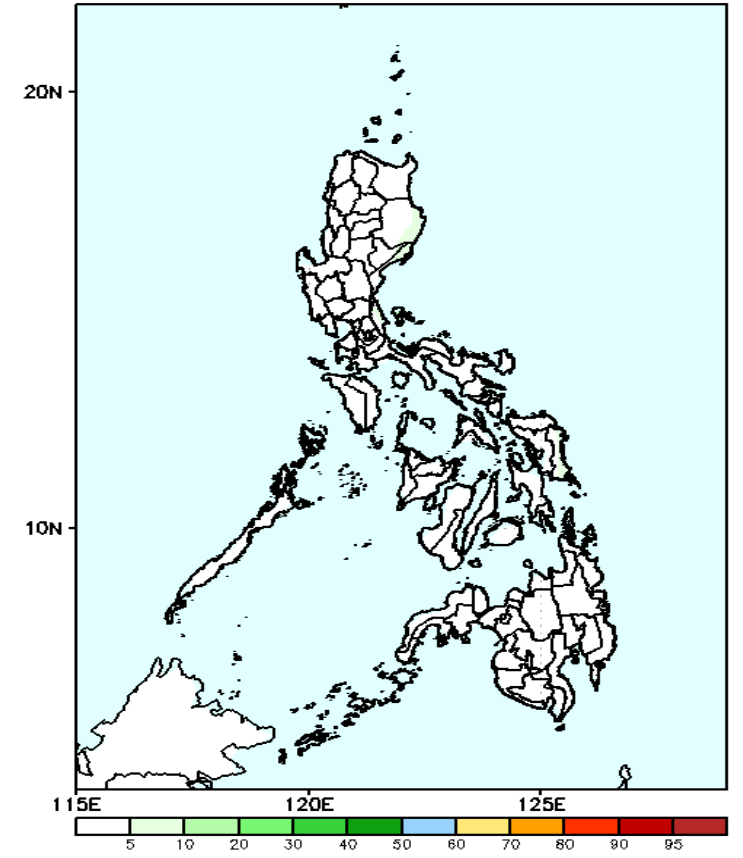
**Probability to Exceed 100mm**  
•Low across the country.

GEFS Week-1 Exceedance Prob. > 150mm  
Valid: 20250324 - 20250330



**Probability to Exceed 150mm**  
•Low across the country.

GEFS Week-1 Exceedance Prob. > 200mm  
Valid: 20250324 - 20250330

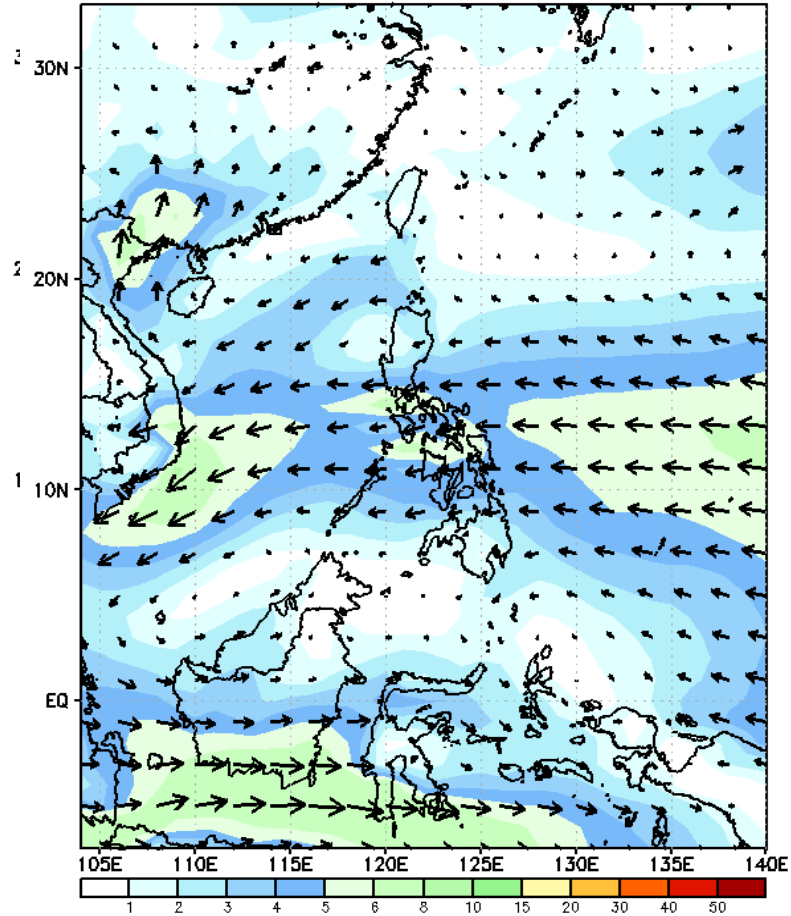


**Probability to Exceed 200mm**  
•Low across the country.

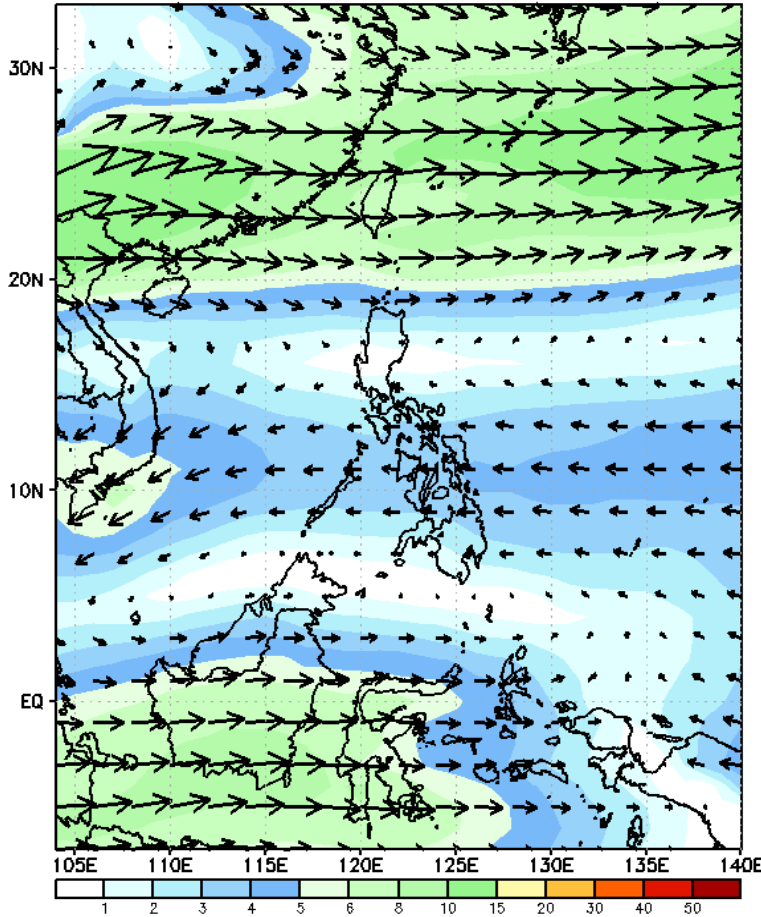
# GEFS Week-2 Wind Forecasts:

Week 2: Mar 28- Apr 03, 2025

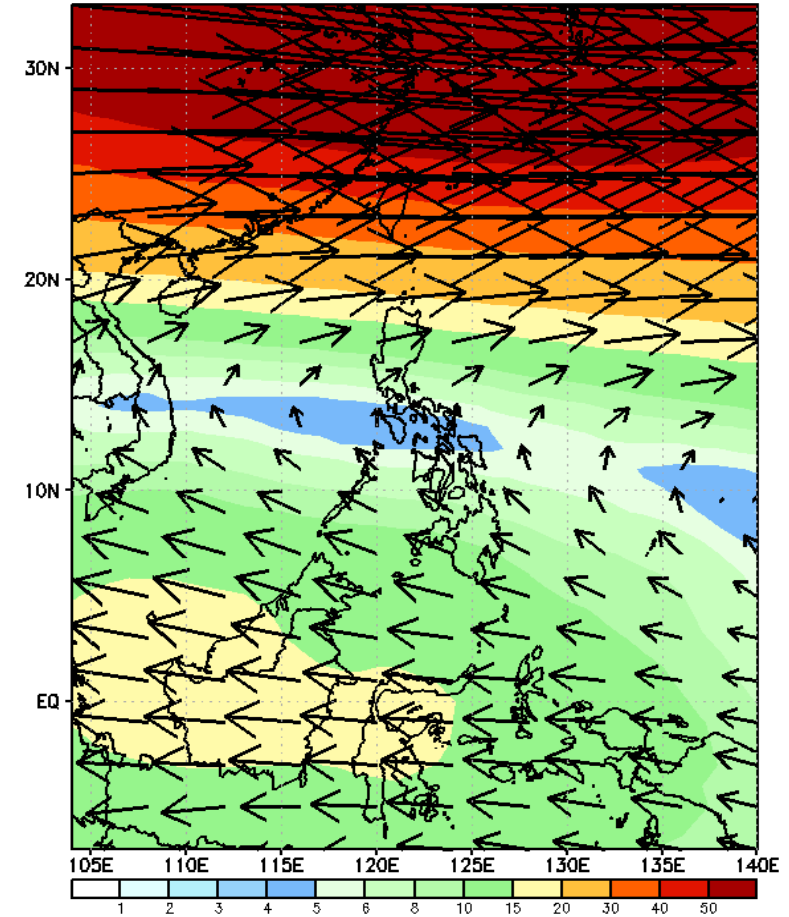
GEFS Week-2 850-hPa Wind Total  
Valid: 20250331 - 20250406



GEFS Week-2 700-hPa Wind Total  
Valid: 20250331 - 20250406



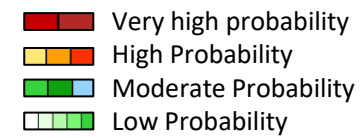
GEFS Week-2 200-hPa Wind Total  
Valid: 20250331 - 20250406



Easterlies affecting most parts of the country during the forecast period

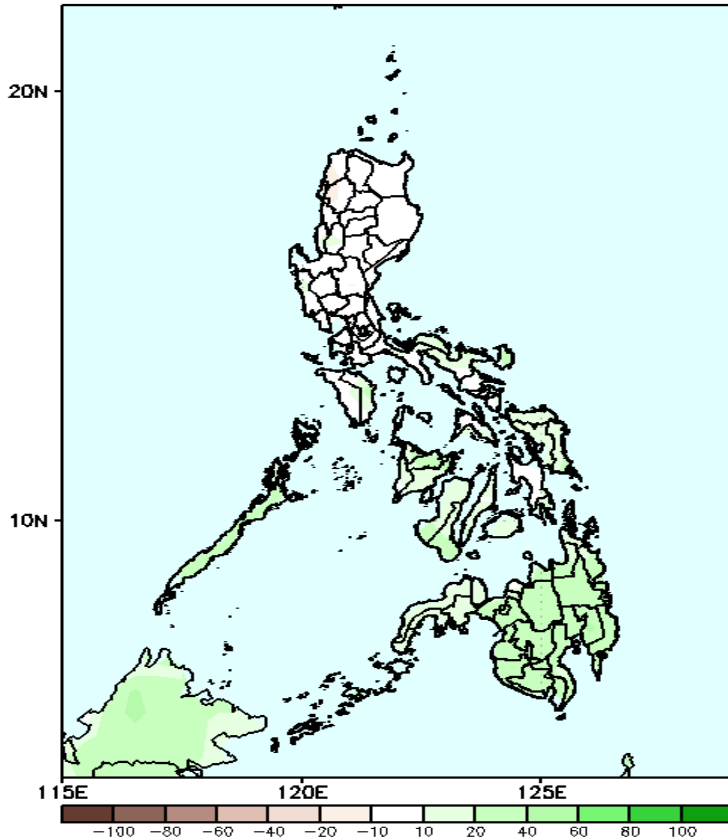


# Precipitation Anomaly and Exceedance Probability > 25/50 mm



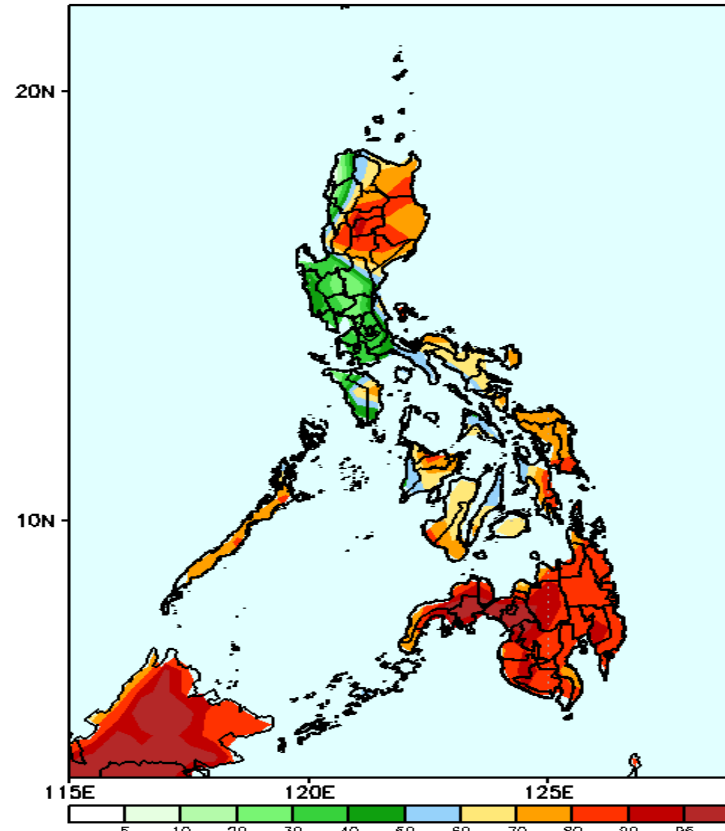
Week 2: Mar 28- Apr 03, 2025

GEFS Week-2 Precip Anomaly  
Valid: 20250331 - 20250406



Increase of rainfall of 20-40mm is expected over Palawan, some parts of Visayas and most of Mindanao.

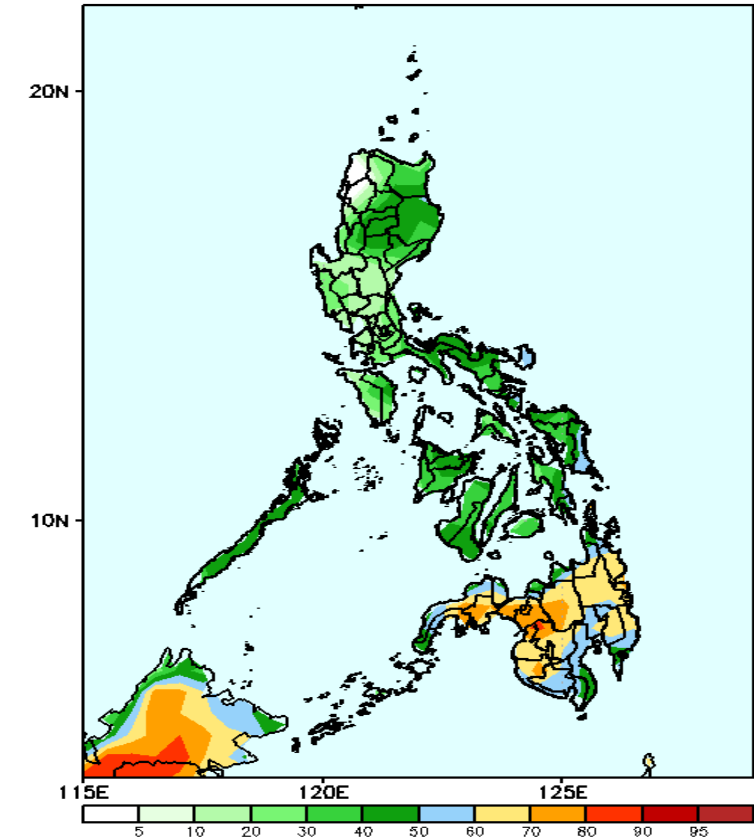
GEFS Week-2 Exceedance Prob. > 25mm  
Valid: 20250331 - 20250406



## Probability to Exceed 25mm

- High to very high over most parts of Mindanao;
- Moderate to high over the rest of the country.

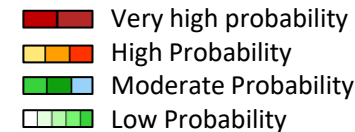
GEFS Week-2 Exceedance Prob. > 50mm  
Valid: 20250331 - 20250406



## Probability to Exceed 50mm

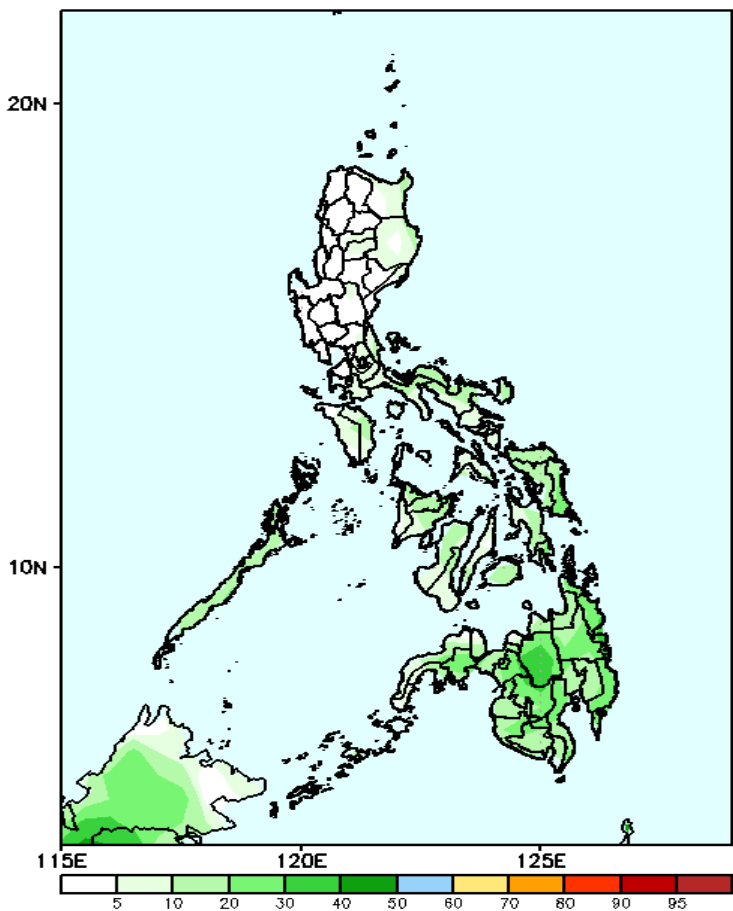
- Moderate to high over Mindanao;
- Low to moderate over the rest of the country

# Exceedance Probability > 100/150/200 mm



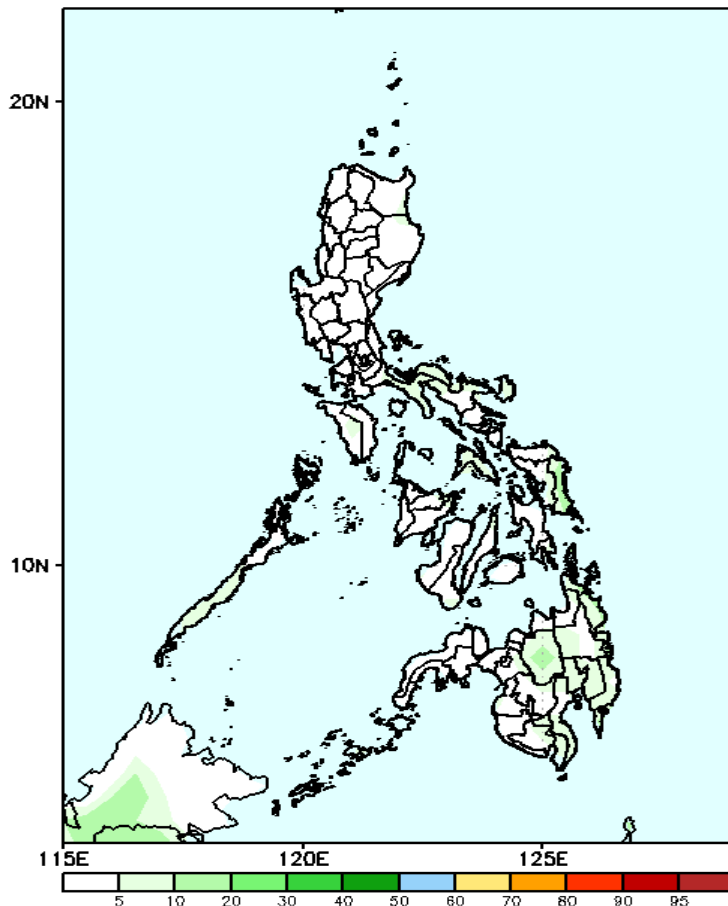
## Week 2: Mar 28- Apr 03, 2025

GEFS Week-2 Exceedance Prob. > 100mm  
Valid: 20250331 - 20250406



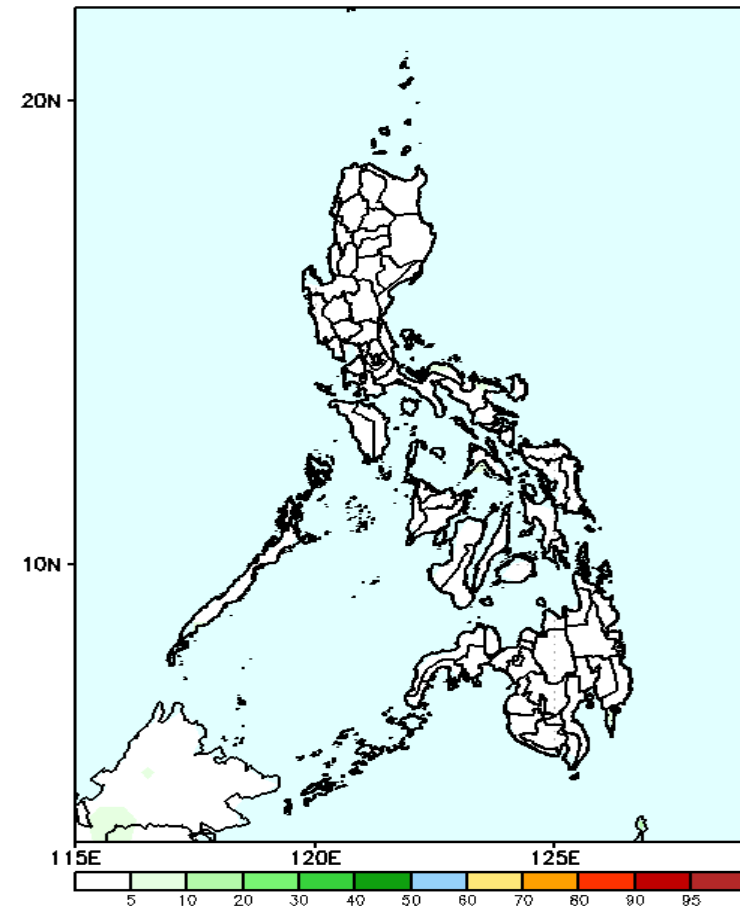
**Probability to Exceed 100mm**  
•Low to moderate over Mindanao;  
•Low over the rest of the country.

GEFS Week-2 Exceedance Prob. > 150mm  
Valid: 20250331 - 20250406



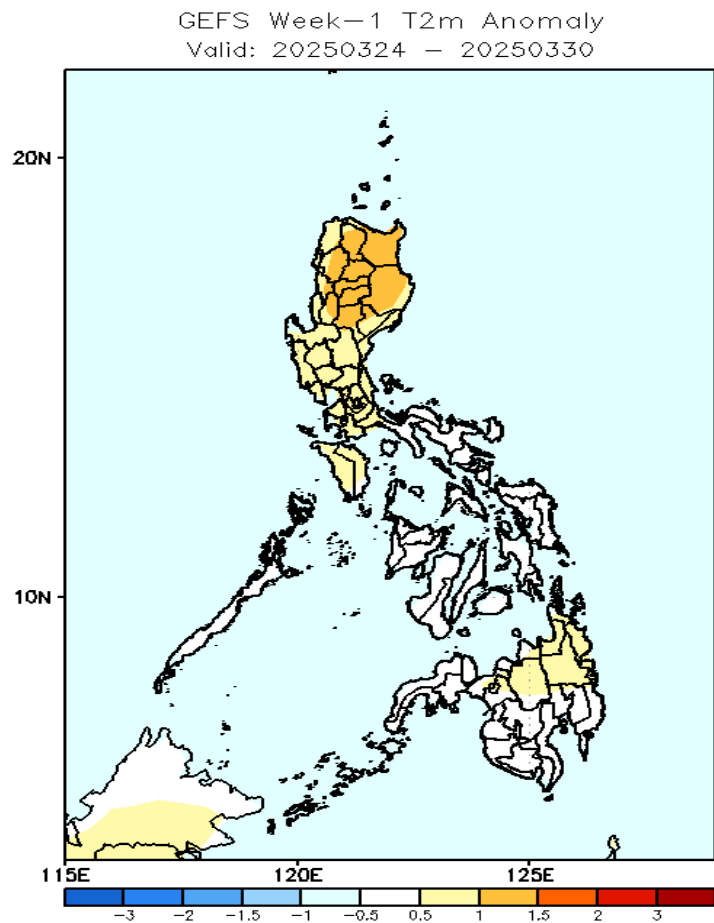
**Probability to Exceed 150mm**  
•Low across the country.

GEFS Week-2 Exceedance Prob. > 200mm  
Valid: 20250331 - 20250406



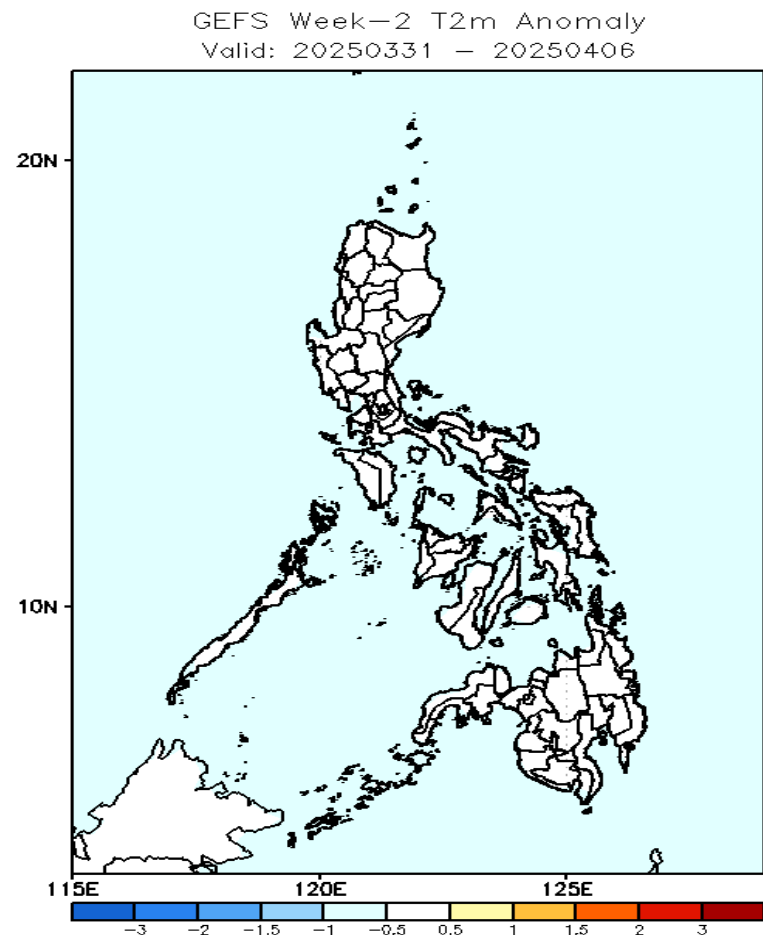
**Probability to Exceed 200mm**  
•Low across the country.

# GEFS Week-1 & 2 Forecasts: T2m Anomaly



## 2m Temperature Week 1: Mar 21-27, 2025

Near to slightly warmer average surface air temperature will likely be experienced in most parts of the country.



## 2m Temperature Week 2: Mar 28- Apr 03, 2025

Near average surface air temperature will likely be experienced in most parts of the country.